



Calcyclin Monoclonal Antibody

Catalog No	YP-Ab-12603
Isotype	IgG
Reactivity	Human
Applications	WB;IHC;IF;ELISA
Gene Name	CACYBP
Protein Name	Calcyclin-binding protein
Immunogen	Purified recombinant fragment of Calcyclin expressed in E. Coli.
Specificity	Calcyclin Monoclonal Antibody detects endogenous levels of Calcyclin protein.
Formulation	Purified antibody in PBS containing 0.03% sodium azide.
Source	Monoclonal, Mouse
Purification	Affinity purification
Dilution	WB: 1/500 - 1/2000. IHC: 1/200 - 1/1000. ELISA: 1/10000.. IF 1:50-200
Concentration	1 mg/ml
Purity	≥90%
Storage Stability	-20°C/1 year
Synonyms	CACYBP; S100A6BP; SIP; PNAS-107; Calcyclin-binding protein; CacyBP; hCacyBP; S100A6-binding protein; Siah-interacting protein
Observed Band	
Cell Pathway	Nucleus . Cytoplasm . Cytoplasmic at low calcium concentrations. In neuroblastoma cells, after a retinoic acid (RA) induction and calcium increase, it localizes in both the nucleus and cytoplasm. The nuclear fraction may be phosphorylated.
Tissue Specificity	Brain,Colon carcinoma,Hepatoma,Liver,Promyelocytic leukemia,Skeletal muscle
Function	function:May be involved in calcium-dependent ubiquitination and subsequent proteosomal degradation of target proteins. Probably serves as a molecular bridge in ubiquitin E3 complexes. Participates in the ubiquitin-mediated degradation of beta-catenin (CTNNB1).,PTM:Phosphorylated on serine residues. Phosphorylated upon induction by RA or at high calcium concentrations.,similarity:Contains 1 CS domain.,similarity:Contains 1 SGS domain.,subcellular location:Cytoplasmic at low calcium concentrations. In neuroblastoma cells, after a retinoic acid (RA) induction and calcium increase, it localizes in both the nucleus and cytoplasm. The nuclear fraction may be phosphorylated.,subunit:Interacts with protein of the S100 family S100A1, S100A6, S100B, S100P and S100A12 at physiological calcium concentrations (By similarity). Component of some large E3 complex at least composed of UBE2D1, SIAH1, CAC



Background

The protein encoded by this gene is a calcyclin binding protein. It may be involved in calcium-dependent ubiquitination and subsequent proteosomal degradation of target proteins. It probably serves as a molecular bridge in ubiquitin E3 complexes and participates in the ubiquitin-mediated degradation of beta-catenin. Two alternatively spliced transcript variants encoding different isoforms have been found for this gene. [provided by RefSeq, Jul 2008],

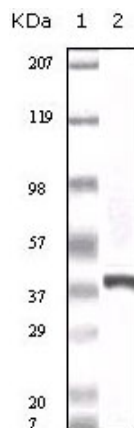
matters needing attention

Avoid repeated freezing and thawing!

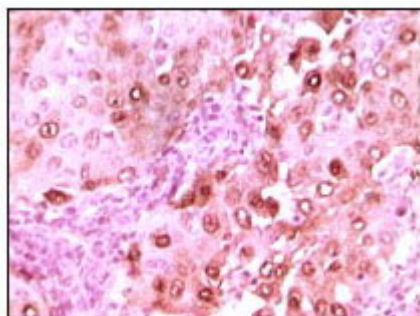
Usage suggestions

This product can be used in immunological reaction related experiments. For more information, please consult technical personnel.

Products Images



Western Blot analysis using Calcyclin Monoclonal Antibody against truncated calcyclin recombinant protein.



Immunohistochemistry analysis of paraffin-embedded human brain glioma tissue showing nuclear localization with DAB staining using Calcyclin Monoclonal Antibody.